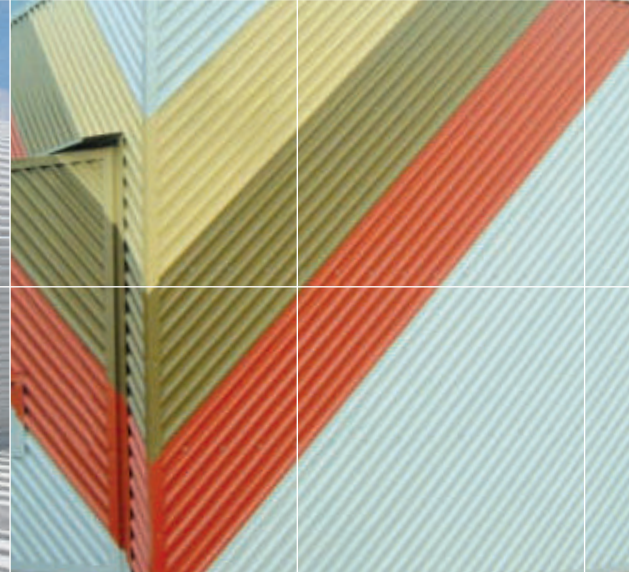
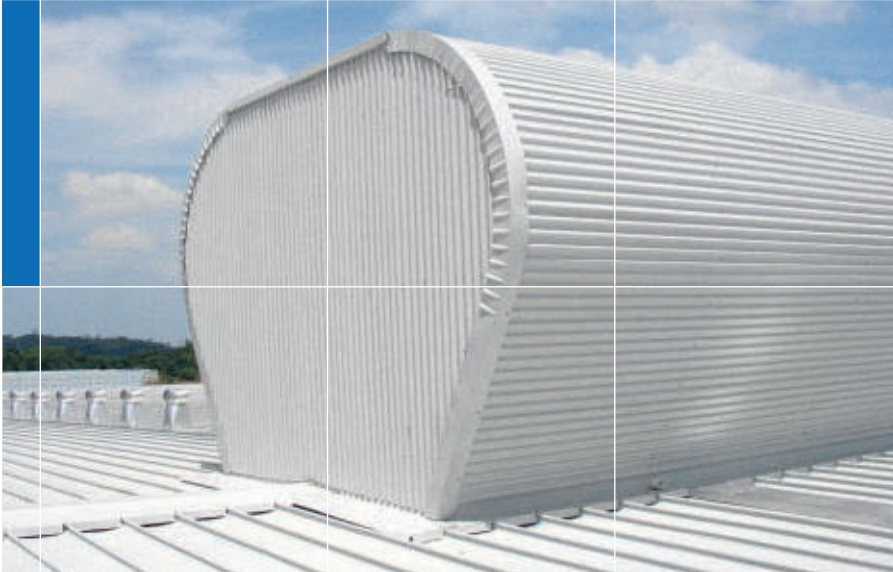


NS BLUESCOPE LYSAGHT MALAYSIA

# LYSAGHT® SPANDEK® OPTIMA™

Installation Guide



Structural Solutions



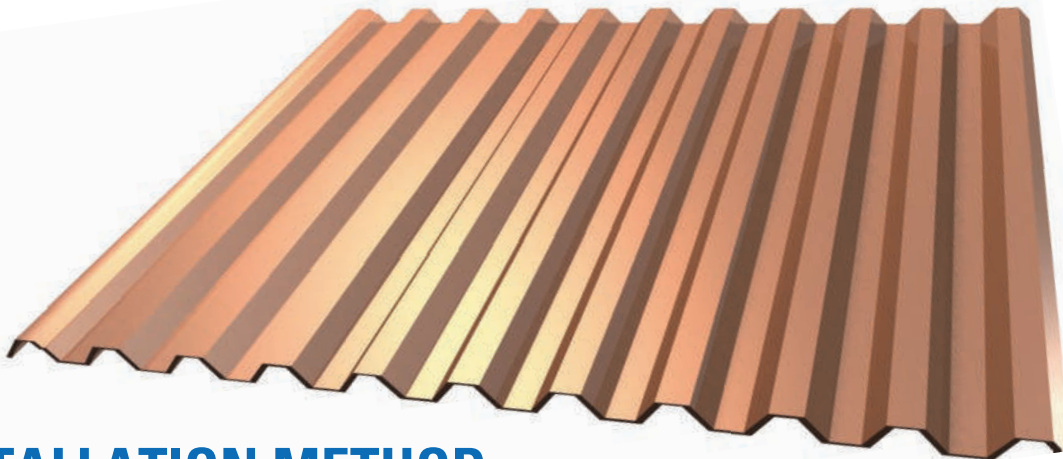
Roofing & Walling Solutions



House Framing Solutions

# LYSAGHT® SPANDEK® OPTIMA™

Trapezoidal steel cladding with longer spanning capability



## INSTALLATION METHOD

Fasteners without Insulation			
	Fixing to steel up to 0.75mm BMT	Fixing to steel >0.75mm to 3mm BMT	Fixing to timber
Crest fixed	Self drilling screws with hex. washer-head & EPDM seal, 12 - 11 x 50 (M5.5 - 11 x 50)	Self drilling screws with hex. washer-head & EPDM seal, 12 - 14 x 50 (M5.5 - 14 x 50) OR 12 - 14 x 55 (M5.5 - 14 x 55)	Type 17 Self drilling screws with hex. washer-head & EPDM seal, <i>Softwood:</i> 12 - 11 x 65 (M5.5 - 11 x 65) <i>Hardwood:</i> 12 - 11 x 50 (M5.5 - 11 x 50)
Valley fixed	Self drilling screws with hex. washer-head & EPDM seal, 10 - 12 x 20 (M4.8 - 12 x 20) OR Self drilling screws with hex. washer-head & EPDM seal, 10 - 16 x 16 (M4.8 - 16 x 16)	Self drilling screws with hex. washer-head & EPDM seal, 12 - 14 x 20 (M5.5 - 14 x 20) OR 12 - 14 x 30 (M5.5 - 14 x 30)	Type 17 Self drilling screws with hex. washer-head & EPDM seal <i>Softwood:</i> 10 - 12 x 30 (M4.8 - 12 x 30) <i>Hardwood:</i> 10 - 12 x 20 (M4.8 - 12 x 20)
Side lap & accessories	Self drilling hex. head screws with washer & EPDM seal	10 - 16 x 16 OR EPDM seal: 8 - 15 x 15	

### FASTENERS

LYSAGHT® SPANDEK® OPTIMA™ requires 5 fasteners per sheet per support as shown below. Fasteners should comply to AS3566, Class 3 or Class 4.

#### Roof - Screw fix through rib

Crest - 5 fixing



#### Wall - Screw fix through pan

Valley - 5 fixing



### FASTENING SHEETS TO SUPPORTS

LYSAGHT® SPANDEK® OPTIMA™ is pierce-fixed to timber or steel supports. This means that fastener screws pass through the sheeting.

You can place screws for LYSAGHT® SPANDEK® OPTIMA™ through the crests or in the valleys. To maximise watertightness, always place roof screws through the crests. For walling, you may use either crest- or valley-fixing.

Always drive the screws perpendicular to the sheeting, and in the centre of the valley or rib.

Don't place fasteners less than 25mm from the ends of sheets.

### SIDE-LAPS

The edge of LYSAGHT® SPANDEK® OPTIMA™ with the anti-capillary groove is always the underlap (see figures on this page). It is generally considered good practice to use fasteners along side-laps however, when cladding is supported as indicated in Maximum Support Spacings, side-lap fasteners are not usually needed for strength.

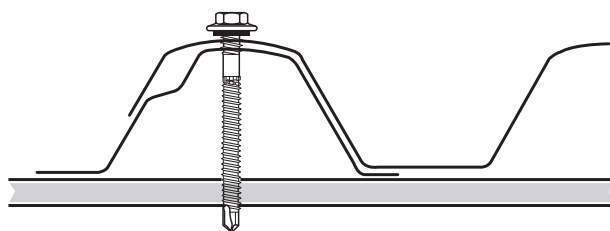
### END LAPPING

End-laps are not usually necessary because LYSAGHT® SPANDEK® OPTIMA™ is available in long lengths.

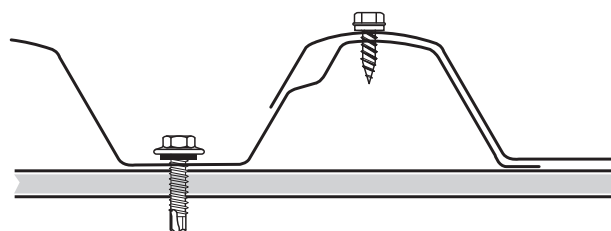
If you want end-laps, seek advice from our information line on the sequence of laying and the amount of overlap.

### ENDS OF SHEETS

It is usual to allow roof sheets to overlap into gutters by about 50mm. If the roof pitch is less than 25° or extreme weather is expected, the valleys of sheets should be turned-down at lower ends, and turned-up at upper ends by about 80°.



Crest fixing for roof or walls



Valley fixing for walls only

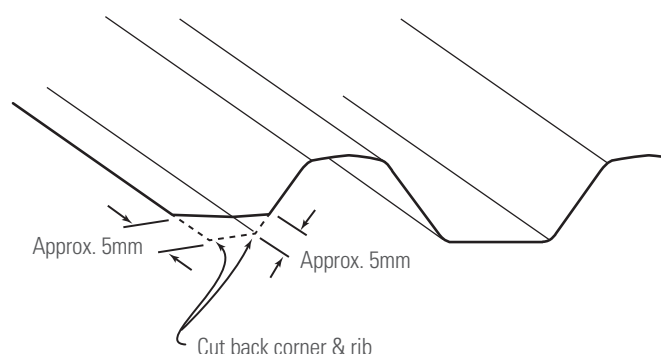
### LAYING PROCEDURE

For maximum weather-tightness, start laying sheets from the end of the building that will be in the lee of the worst-anticipated or prevailing weather.

It is much easier and safer to turn sheets on the ground than up on the roof.

Before lifting sheets on to the roof, check that they are the correct way up and the overlapping side is towards the edge of the roof from which installation will start.

Place bundles of sheets over or near firm supports, not at mid span of roof members.



### SHEET-ENDS ON LOW SLOPES

When LYSAGHT® SPANDEK® OPTIMA™ is laid on slopes of 5 degrees or less, cut back the corner of the under-sheet, at the downhill end of the sheet, to block capillary action.

### ADVERSE CONDITIONS

If this product is to be used in marine, severe industrial, or unusually corrosive environments, ask for advice from our information line.

### METAL & TIMBER COMPATIBILITY

Lead, copper, free carbon, stainless steel, bare steel and green or some chemically-treated timber are not compatible with this product. Don't allow any contact of the product with those materials, nor discharge of rainwater from them onto the product. Supporting members should be coated to avoid problems with underside condensation. If there are doubts about the compatibility of other products being used, ask for advice from our information line.

### MAINTENANCE

Optimum product life will be achieved if all external walls are washed regularly.

Areas not cleaned by natural rainfall (such as the tops of walls sheltered by eaves) should be washed down every six months.

### SAFETY, STORAGE AND HANDLING

LYSAGHT® product may be sharp and heavy.

It is recommended that heavy-duty cut resistant gloves and appropriate manual handling techniques or a lifting plan be used when handling material.

Keep the product dry and clear off the ground. If stacked or bundled product becomes wet, separate it, wipe it with a clean cloth to dry thoroughly.

Handle materials carefully to avoid damage: don't drag materials over rough surfaces or each other; don't drag tools over material; protect from swarf.

**CUTTING**

For cutting thin metal on site, we recommend a circular saw with a metal-cutting blade because it produces fewer damaging hot metal particles and leaves less resultant burr than a carborundum disc.

Cut materials over the ground and not over other materials.

Sweep all metallic swarf and other debris from roof areas and gutters at the end of each day and at the completion of the installation. Failure to do so can lead to surface staining when the metal particles rust.

**SEALED JOINTS**

For sealed joints use screws or aluminium rivets and neutral-cure silicone sealant branded as suitable for use with galvanised or ZINCALUME® steel.



# Trusted Partner for Building Systems

## NS BLUESCOPE LYSAGHT MALAYSIA SDN BHD

NO 6, PERSIARAN KEMAJUAN, SEKSYEN 16,  
40200 SHAH ALAM,  
SELANGOR DARUL EHSAN, MALAYSIA.  
**TEL: 603-5520 6600 FAX: 603-5520 6601 / 02**

### NORTHERN

1-2-9, KRYSTAL POINT CORPORATE PARK,  
JALAN TUN DR. AWANG,  
LEBUH BUKIT KECIL 6,  
11900 SUNGAI NIBONG,  
PENANG, MALAYSIA.  
**TEL: 604-646 9553 / 6653 FAX: 604-646 6855**

### SOUTHERN

235, JALAN MURNI 11,  
KAWASAN PERINDUSTRIAN MURNI,  
81400 SENAI,  
JOHOR, MALAYSIA.  
**TEL: 607-598 7600 FAX: 607-598 7604**

## NS BLUESCOPE LYSAGHT SABAH SDN BHD

LORONG KURMA OFF JALAN KOLOMBONG,  
88450 KOTA KINABALU,  
SABAH, MALAYSIA.  
**TEL: 6088-445 161 FAX: 6088-421 178**

## NS BLUESCOPE LYSAGHT (SARAWAK) SDN BHD KUCHING

LOT 610, SECTION 66, PENDING INDUSTRIAL AREA,  
JALAN MERBAU, 93450 KUCHING,  
SARAWAK, MALAYSIA.  
**TEL: 6082-333 621 FAX: 6082-483 486**

### BINTULU

LOT 974, BLOCK 26 KLD,  
KIDURONG LIGHT INDUSTRIAL ESTATE,  
97000 BINTULU, SARAWAK, MALAYSIA.  
**TEL: 6086-251 736 FAX: 6086-252 881**

## NS BLUESCOPE LYSAGHT SINGAPORE PTE LTD

(Formerly known as BlueScope Lysaght (Singapore) Pte Ltd.)  
18 BENOI SECTOR,  
JURONG TOWN,  
SINGAPORE 629851  
**TEL: 65-6264 1577 FAX: 65-6265 0951**

[www.lysaght.com.sg](http://www.lysaght.com.sg)

## NS BLUESCOPE LYSAGHT (BRUNEI) SDN BHD

INDUSTRIAL COMPLEX,  
BERIBI PHASE 1,  
6KM, JALAN GADONG,  
BANDAR SERI BEGAWAN BE 1118,  
BRUNEI DARUSSALAM.  
**TEL: 673-244 7155 FAX: 673-244 7154**

[www.bluescopelysaght.com.bn](http://www.bluescopelysaght.com.bn)

[www.lysaght.com.my](http://www.lysaght.com.my)  
[mysupport@bluescope.com](mailto:mysupport@bluescope.com)  
For more information, please contact:  
**1700-81-8688**



COATING



COLOUR CHOICES



DESIGN FLEXIBILITY



DURABILITY / SECURITY



HI-TECH PRODUCTION



RECYCLING



TERMITE PROOF



THERMAL EFFICIENCY



WARRANTY